

Newsletter



Happy March!

March is a busy month for us at Sooty's and Sweep's! Sooty's is now fully open 7 days a week, Sweeps' Cafe is in high demand for our Mother's Day specials, and Spring has finally arrived!

We've been extremely busy at Sooty's garden centre restocking to prepare! With new product ranges arriving daily, and spring bulbs in stock now's the perfect time to plan, prepare, and start growing in your garden for 2024!

Don't forget to follow us on other socials too!

www.sootysweeps.com



@sweepscafeatsootyplants



@sootyandsweeps



@sootyplants



Jobs to do in the garden this month



Plant shallots, onion sets and early potatoes



Prune bush and climbing roses



Plant summer-flowering bulbs



Lift and divide overgrown clumps of perennials



Mow the lawn on dry days (if needed)



Start feeding fish and using the pond fountain; remove pond heaters



Lift and divide overgrown clumps of perennials



Top dress containers with fresh compost

Welcoming Spring

FROM MARCH 1ST, SOOTYS IS OPEN 7 DAYS A WEEK! SOOTY'S HAS NEW STOCK FOR THE YEAR ARRIVING ALREADY

Spring Bulbs

Spring bulbs are fantastic as they provide early colour throughout your garden, at affordable prices!

We currently have a wide variety in stock.

A few variants are;

- Iris, Pixie, Joyce and Mixed
- Narcissus, Topolino and Baby Moon
- Tulip, Red Riding Hood, Shirley, Jetfire, Guiseppe Verdi
- Camellia's, Snow Drops, Rhododendrons, and more!



OUR TOP TWO STOCK ADDITIONS

- Spring Bulbs (Wide varieties in stock)
- Climbing Roses (Wide varieties in stock)



Climbing Roses

Another new stock we're thrilled about is our climbing roses! These plants are an excellent way of bringing height and, as David Austen Roses states, a feeling of abundance to the garden with bright pops of colour due to their large flowers. Best used on house walls, they can also be added to growing pillars, obelisks, walls, trellises, and over arches.

MOTHER'S DAY

AFTERNOON TEA

SAVOURY ITEMS

A selection of sandwiches ranging from;
Roasted ham & tomato,
Smoked salmon and cucumber
Cheese and onion
Tuna mayonnaise

SWEET TREATS

You will get some delicious freshly made sweet treats,
Ranging from; A victoria sponge cake, a shortbread heart,
a brownie bite, a scone with strawberry jam and butter,
and a orange raspberry & poppyseed sponge slice.

DRINKS

Served with a fresh mimosa AND your choice of either
tea or an americano.

£17.95 per person
£5pp deposit to reserve your
booking

Changes in Sweep's Cafe



LOTS OF NEW MENU ITEMS!

We've been listening to what our customers want, and have added some of our popular 'specials' onto our permanent menu for you all!

As well as our new Slimmers' Way menu - which has been a huge success! Come in today and try something different!

OUR NEW BAKING WINDOW!

Have you ever wondered how our in house bakers make their delicious treats?

Visit us today, and watch for yourself inside our Chalet!



TO BOOK A TABLE PLEASE CALL
01772 812540

Blooming lovely flowers

Sooty's Plants also has a diverse range of flower seeds in stock.

To further promote wildlife and nature in your garden, we recommend allocating a small section of our garden to grow a wide variety of flowers.

Our seeds include many annuals - which are easy to grow and provide vibrant colourful flowers throughout summer.



Our top tips for gardening flowers in March are

- Pick off any developing seedheads on daffodils and other spring bulbs, but leave the foliage to die back naturally
- Finish pruning roses early in the month
- Cut dogwoods, willows, cotinus and paulownia right down to the base to promote vigorous new growth
- Plant faded forced bulbs out in the garden for blooms next year
- Plant lilies and other summer-flowering bulbs in pots and borders. Take a look at our complete guide to planting bulbs.
- Feed ericaceous shrubs, such as rhododendrons, azaleas, camellias and pieris, with an ericaceous fertiliser
- Mulch borders generously with garden compost
- Plant new roses and other shrubs and climbers
- Sow wildflower seeds in trays or modules, to produce plants for your own mini-meadow
- Check tender new shoots for aphids, and remove before infestations get out of hand



March Sowing and Planting Guide

Spring is finally upon us, and usually arrives mid-March. These frequent sunny days provide a fantastic opportunity for increasing the range of gardening jobs we can achieve! So read this guide, and prepare to be busy! From prepping seed beds to cutting back winter shrubs, to sowing seeds, and more, let's get back into the garden!

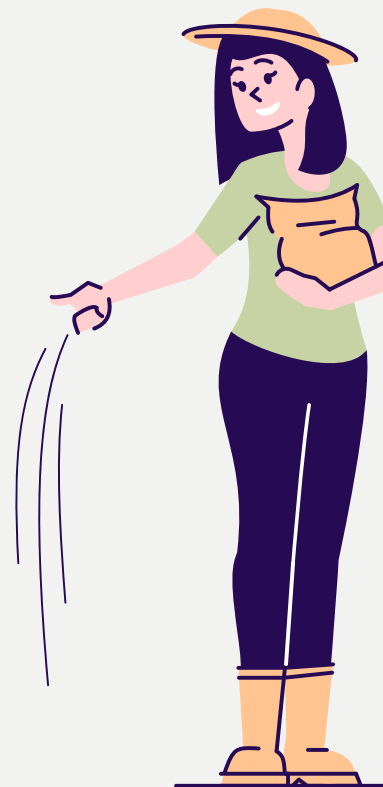
Sowing and planting

Fruit

- March is your last chance to plant bare-root fruit trees (ideally plant container-grown ones too).
- Plant cold-stored strawberry runners.
- Sow seeds of alpine strawberries.

Vegetables

- Plant onions, shallots, and garlic sets.
- Plant Jerusalem artichoke tubers.
- Chit early and maincrop potatoes.
- Plant asparagus crowns.
- Indoors, sow seeds of sweet peppers, tomatoes, cucumbers, aubergines, celery, salads, and globe artichokes.
- In mild areas with light soil, sow seeds outdoors. Broad beans, carrots, parsnips, beetroot, onions, lettuce, radish, peas, spinach, summer cabbage, salad leaves, leeks, turnip, summer cauliflower, swiss chard, and kohlrabi.





March



Pruning/General maintenance

Fruit

- Carry out formative pruning of newly planted fruit trees if the weather is dry.
- Prune blueberries
- Untie canes of blackberries and hybrid berries that have been bundled together for winter - train into arches.
- Never prune grape vines after late winter to avoid sap bleeding - otherwise the vines can become weakened or killed.
- Mulch raspberries, blueberries, and lingonberries with well-rotted farmyard manure.
- Increase the watering of citrus as growth resumes.
- Switch to a summer feed for all citrus trees.
- Repot or top-dress container grown fruit if needed.

Vegetables

- Protect early outdoor sowing with fleece and polythene.
- Put supports in place for peas.
- Start preparing runner bean supports and trenches for sowing (in May) for both runner beans and celery.
- Try to avoid digging in wet weather - work from a plank of wood if your must, to avoid treading on the bed and compacting soil.

Problems

- Place mice controls near stored vegetables and seeds.
- Protect early seed sowing from slugs.
- Protect brassicas from pigeons - and look out for grey mould/mildew.
- Get on top of weed control now, before summer.



Quiz Time!

Good luck!

What should be the optimum pH of potting medium for the successful growing of fern

- a. 4-7
- b. 3-3.5
- c. 6.5-7



_____ containers are cheap and ideal for home garden?

- a. Plastic
- b. Earthen
- c. Concrete

What should be the optimum soil temperature of potting medium?

- a. 18 - 21C
- b. 10-20C
- c. 8-10C



In what season should you plant daffodil bulbs?

- a. Spring
- b. Summer
- c. Fall



Air layering is common in ...

- a. Cotinus
- b. Dracaena
- c. Aglaonema



*We can't wait to
welcome you!*

